

# The 14th Formation Evaluation Symposium of Japan

**- Special Session: Logging While Drilling -**

## PROGRAM

**JOGMEC-TRC, Chiba  
September 29 - 30, 2008**

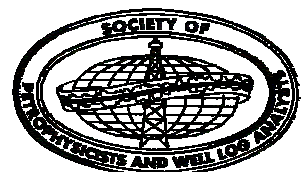
Sponsored by Japan Formation Evaluation Society – A Chapter of SPWLA  
Cosponsored by Technology & Research Center, Japan Oil, Gas and Metals  
National Corporation  
Supported by Japanese Association for Petroleum Technology  
Society of Exploration Geophysicist of Japan  
Geothermal Research Society of Japan  
Society of Petroleum Engineers, Japan Section

JFES

Japan  
Formation Evaluation  
Society



<http://www.geocities.jp/ymmiya/index.htm>



# Technical Program Timetable

## Monday, September 29

8:30 - 17:00	<i>Registration</i>	Entrance Hall
8:30 - 17:00	<i>Slide Center</i>	Room 101
9:10 - 9:40	Opening Session	Lecture Hall
9:40 - 12:00	Special Session (LWD1/Scientific Drilling)	Lecture Hall
12:00 - 13:00	<i>Lunch</i>	Cafeteria
13:00 - 13:30	Poster Session 1	Lecture Hall
13:30 - 14:50	Special Session (LWD2)	Lecture Hall
14:50 - 15:00	<i>Coffee Break</i>	Lobby
15:00 - 16:00	Methane Hydrate	Lecture Hall
16:00 - 17:20	New Technology	Lecture Hall
17:45 - 19:30	<i>Icebreaker</i>	Cafeteria

## Tuesday, September 30

8:30 - 15:00	<i>Registration</i>	Entrance Hall
9:00 - 10:20	General Formation Evaluation 1	Lecture Hall
10:20 - 10:40	<i>Coffee Break</i>	Lobby
10:40 - 12:00	General Formation Evaluation 2	Lecture Hall
12:00 - 13:00	<i>Lunch</i>	Cafeteria
13:00 - 13:30	Poster Session 2	Lecture Hall
13:30 - 15:10	Reservoir Characterization 1	Lecture Hall
15:10 - 15:30	<i>Coffee Break</i>	Lobby
15:30 - 16:30	Reservoir Characterization 2	Lecture Hall
16:30 - 16:40	<i>Closing</i>	Lecture Hall

## Technical Program: Monday, September 29

### Opening Session

*Chairperson: Kazuhiko Tezuka (JAPEX)*

**9:10 Opening Address:** Makoto Miyairi (President of JFES, JAPEX)

**9:20 Keynote Address: The SPWLA - 50 Years and Still Counting**  
Terry Quinn (President of SPWLA, INTEQ, Baker Hughes)

### Special Session (LWD1/Scientific Drilling)

*Chairperson: Osamui Osawa (Schlumberger)*

**9:40 Invited Talk: How Drilling and Economics Continue to Shape the Future of LWD and Formation Evaluation:** Jack Horkowitz (Schlumberger)

**10:20 – 10:30 Coffee Break**

**10:30 A Preliminary Results from IODP Expedition 314: LWD Transect at Nankai seismogenic zone off Kumano:** Masataka Kinoshita (IFREE-JAMSTEC), Harold Tobin (University Wisconsin-Madison, USA), Moe Kyaw Thu (CDEX-JAMSTEC), IODP Expedition 314 Science Party

**10:45 B Expedition Review of NanTroSEIZE STAGE 1 LWD Transect: Logging-While-Drilling Planning, Operational Challenges and Data Quality:** Moe Kyaw Thu, Yoshinori Sanada, Yukari Kido (CDEX-JAMSTEC), Philippe Gaillot (Exxon-Mobil) and IODP Expedition 314 Scientists

**11:00 C Study on Drilling Conditions using MWD data during IODP Expedition 314:** Yuichi Shinmoto (CDEX-JAMSTEC), IODP Expedition 314 Scientists

**11:15 D LWD Sonic Log Quality in NanTroSEIZE Stage1A:** Yoshinori Sanada (JAMSTEC), Wei Liu (Schlumberger), Philippe Gaillot (ExxonMobil Upstream Research Company), Moe Kyaw Thu (CDEX-JAMSTEC), IODP Expedition 314 Science Party

**11:30 E Log-Seismic Data Correlation Using 3D Seismic and IODP Exp.314 LWD Data in the Nankai Trough:** Yasuyuki Nakamura (University of Tokyo), Masataka Kinoshita (IFREE-JAMSTEC), Harold Tobin (University of Wisconsin-Madison), IODP Exp314 Science Party

**11:45 F Structural Analysis with LWD Data from IODP Exp. 314 and its Correlation to Seismic Profiles:** Yasuhiro Yamada (Kyoto University), J. Casey Moore (University of California), Lisa McNeill (University of Southampton), IODP Expedition 314 Shipboard Scientific Party

**12:00 – 13:00 Lunch**

### Poster Session 1

**13:00 – 13:30 Poster : Formation Evaluation**

## Special Session (LWD2)

Chairperson: Hisao Ito (JAMSTEC)

- 13:30 Invited Talk: LWD on Wired Pipe - Enabling Real-Time Decisions Where Needed:**  
Terry Quinn (President of SPWLA, INTEQ, Baker Hughes)
- 13:50 G Understanding the Application of LWD Formation Tester in Highly Deviated Wells – Lessons Learned:** Abraham J.S. Simanjuntak, Mark Bacciarelli, Gavin Lindsay (Baker Hughes INTEQ), Rozlyn Hassan (Talisman Energy)
- 14:10 H Next Generation LWD Sonic Tool:** Toshihiro Kinoshita, Takeshi Endo, Hiroshi Nakajima, Hiroaki Yamamoto, Alain Dumont, Andy Hawthorn (Schlumberger)
- 14:30 I Proactive Well Placement using new Boundary-Mapping Technology:** Zhang Jun Jie, Du Hong Ling, Li Qing (Xinjiang Oil Company, Petro China), Shim Yen Han, Jeffrey Kok, Yang Bin (Schlumberger)
- 14:50 – 15:00 Coffee Break**

## Methane Hydrate

Chairperson: Fumio Okitsu (Consultant)

- 15:00 J Formation evaluation of free gas zone beneath bottom simulating reflector:** Hitoshi Mikada (Kyoto University), Takao Inamori, Tatsuo Saeki (JOGMEC), Katsuko Suzuki (Schlumberger K.K.), Kyosuke Onishi (Kyoto University)
- 15:20 K Wire-Line Logging Analyss of the 2007 JOGMEC/NRCAN/Aurora Mallik Gas Hydrate Production Test Well:** Tetsuya Fujii, (JOGMEC), Tokujiro Takayama (JAPEx), Koji Yamamoto, Takao Inamori (JOGMEC), Scott Dallimore, Jonathan Mwenifumbo (Geological Survey of Canada, Natural Resources Canada), Ahmed Al-Jubori (Schlumberger Canada Ltd.)
- 15:40 L The Rock Physics Model of Methane Hydrate-Bearing Sediments:** Takao Inamori, Tatsuo Saeki (JOGMEC)

## New Technology

Chairperson: Hideki Saito (OYO)

- 16:00 M Temperature Transient Monitoring Using the Distributed Temperature Sensing (DTS) System during the Cement Curing Process.:** Naoki Sakiyama, Yoko Morikami, Toru Ikegami, (Schlumberger K. K.), Vyacheslav Pimenov, Valery Shako, Masafumi Fukuhara (Schlumberger Moscow Research), Kasumi Fujii (JOGMEC)
- 16:20 N Real Time Carbon Dioxide Quantification Using Wireline Formation Tester to Optimize Completion and Drill Stem Testing Decisions:** Xu Li Qiang, Cai Jun, Guo Shu Sheng, Yi Ping, Xiao Dong, Dai Yi Ding, Yang Shao Kun (CNOOC Shenzhen Limited), Khong Chee Kin, Go Fujisawa, Chengli Dong, Oliver C. Mullins (Schlumberger)
- 16:40 O Estimation of Multi-Phase Flow in Single Fracture Using Lattice Boltzmann Method:** Sumihiko Murata (Kyoto University), Takashi Akai (JOGMEC), Toshiki Otani, Tsuyoshi Ishida (Kyoto University)
- 17:00 P Detection of Surface Deformation Related with CO2 Injection by DInSAR at In Salah, Algeria:** Takumi Onuma (JGI, Inc.), Shiro Ohkawa (JAPEx)

## Technical Program: Tuesday, September 30

### General Formation Evaluation 1

Chairperson: Yusuke Kuwauchi (Mitsui Oil Exploration)

- 9:00 Q Porosity Calculation in Volcanic Reservoirs - A Case Study for Songliao Basin, China:** XingWang Yang (Schlumberger DCS), Dawei Zhang, Bo Xu, Wei Guo Xing, Hongyong Ji, Nai bin Mu (PetroChina Jilin Oilfield)
- 9:20 S Core to Log Integration Leads to Improve NMR log Interpretation in a Extra Heavy Oil Reservoirs, Orinoco Heavy Oil Belt, Venezuela:** Miguel A. Expósito (Gazprom LA), José Marcos (Baker Atlas), Jhonny E. Casas (Gazprom LA), Olga A. García (PetroCedeño), Carlos Minetto (Baker Atlas), , Jesus Hernandez (Pdvsa (CVP))
- 9:40 T Investigation of Cementation Factor in Iranian Carbonate Reservoirs:** Masoud Asadollahi, Ali Mohammad Bagheri (International Research Institute of Stavanger (IRIS)), Manouchehr Haghighi (Tehran University), Mehran Namani (Research Institute of Petroleum Industry (RIPI)-NIOC)
- 10:00 KK The Free Phase Gas Distribution in Formation Detected by Mud Gas Research using Mudlogging; In the Case of Water Dissolved Type Natural Gas, in Southern Part of the Minami Kanto Gas field, Japan:** Hiroshi Iwamoto, Tsutomu Nakagawa (Kanto Natural Gas Development)

**10:20 – 10:40 Coffee Break**

### General Formation Evaluation 2

Chairperson: Kunihiro Tsuchida (JOGMEC)

- 10:40 U Petrophysical Analysis on the Low Resistivity Reservoir Sandstone in the Japan Sea:** Naofumi Sakuyama (Idemitsu Oil & Gas Co., Ltd. )
- 11:00 V A Method Using Petrophysical Characters to Reduce Drilling Cost by Avoiding High CO2 Non-Commercial Gas Reservoirs in the Platong Gas Field, Gulf of Thailand:** Masashi Fujiwara, Makoto Yamada (MOECO), Akio Sasaki (Akita University)
- 11:20 W Searching For Permeability ‘Logging’:** Nadezhdin Oleg Vladimirovich, Ramazanov Rustem Maratovich, Savichev Vladimir Ivanovich (“Rosneft” oil company )
- 11:40 X Application of Wireline Formation Tester in Low Permeability Formation:** Li Guo Xin, Liu Guo Qiang, Zhou Can Can, Lv Fu Shu, Zhao Zuo An, Zhang Da Wei (Petro China), Chee Kin Khong, Wu Jie Hui, Zhuang Xiang Qi, Zhou Jia Sheng (Schlumberger DCS)

**12:00 – 13:00 Lunch**

### Poster Session 2

**13:00 – 13:30 Poster : Reservoir Characterization**

## Reservoir Characterization 1

Chairperson: Hiroshi Kozano (Teikoku Oil)

- 13:30 Y Study on Productivity of Horizontal Wells with Segmental Perforation Based on Pseudo Steady-State Flow:** Liu hui, He Shunli (China University of Petroleum)
- 13:50 Z Enhanced Hydrocarbon Production based on the Advanced Interpretation of Multi-component Induction Data in the Presence of Eccentricity:** Cynthia Xue, Ph.D., Michael Rabinovich, Paddy Deo (Baker Hughes Inc.)
- 14:10 AA History Matching Strategies of Hierarchical Geostatistical Modeling. :** Mayu Otake (Teikoku Oil Co., Ltd)
- 14:30 BB Integrated Multi-Disciplinary Workflow Enables Understanding of Depositional Setting and Unraveling the Intricate Fabric of Heterogeneous Carbonate:** Sangeeta Singhal, Indrajit Bandyopadhyay, Qui Yi Gang, Chen Guang Jun, Wei Guo(Schlumberger)
- 14:50 CC Carbonates; Fractured or Non-Fractured? An Insight into Fractured Reservoirs Based on Multidisciplinary Approach (Case Study):** Mohammad Roostaeian, Mohammadreza Ghafoori, Saeed Sajjadian (National Iranian Oil Company), ValiAhmad Sajjadian (Petroleum University of Technology, Ahwaz, Iran)
- 15:10 – 15:30 Coffee Break**

## Reservoir Characterization 2

Chairperson: Tetsuya Yamamoto (JAPEX)

- 15:30 DD Production Sharing and Permeability Distribution Identification in Triple Porosity Carbonate Oil Reservoir by Production Logging Test, PLT, A Field Case Study:** Ahmad Asheghi Hossein, Abolfazl Hashemi, Vali Ahmad Sajjadian, Salbali Karimi (Arvandan Oil & Gas Company, Iran)
- 15:50 EE ATEN-1 Well, Reservoir Architecture Characterization Using Dual Oil Based Micro Imager Log (Offshore Nile Delta, Egypt):** Saad Hasan (Belayim Petroleum Co., ), Mauro Firinu (IEOC Egypt Branch), Ahmed Abu El Fotoh, Dedi Juandi, Mahmoud Emam (Schlumberger Logelco Inc.)
- 16:10 FF Use of Gamma Ray Spectrometry As New Indicator For Hydrocarbon Accumulations of Lower Miocene Reservoir in Belayim Marine Oil Field, Gulf of Suez, Egypt.:** Mohamed Maher Ahmed Gadallah (Alexandria University), El-Terb, R.A., Al kattan, E.M., Al Alfy, I.M. (Exploration Division, Nuclear Materials Authority)
- 16:30 Closing**

## Poster Session

*(Alternate for General Formation Evaluation)*

- GG A Novel Method to Calculate Reservoir Permeability by Using NMR Log and Capillary Pressure Data in Low Porosity/Low Permeability Gas Zones:** Hu Xiao-xin, Liu Xial-peng (Sichuan Petroleum Administration), Zhang Xiao-ying (China University of Petroleum), Liang Xiao (College of Petroleum Resources, Xi'an Petroleum University)
- HH Realtime Insitu Downhole Fluid Analysis to Expedite and Optimize Exploration and Production Endeavors in China:** L.G. Xin, L.G. Qiang, Z.C. Can, L.F.Shu, G.Q. Bin, Z.Z. An, G.W. Guo, L.J. Guo, Z.D. Wei (PetroChina), Khong Chee Kin, Wu Jie Hui, Zhuang Xiang Qi, Chen Li, Go Fujisawa, Chengli Dong, Oliver C. Mullins (Schlumberger),
- II The Effect of Cementation Factor on OOIP in Iranian Carbonate Reservoirs, A Monte Carlo Approach:** Masoud Asadollahi (International Research Institute of Stavanger (IRIS)), Ali Mohammad Bagheri (Research Institute of Petroleum Industry (RIPI)), Manouchehr Haghighi (Tehran University), Mehran Namani (National Iranian Oil Company)
- JJ Source Rock Evaluation of Abu Roash Formation (G Member) in Shushan Basin, North Western Desert, Egypt:** Mohamed Maher Ahmed Gadallah (Alexandria University), Zalat, A.A.(Zagazig University, Egypt.), Hamad, M.M (Petroleum Research Institute), Abdel Razek, E.E (Zagazig University, Egypt.)

*(Alternate for Reservoir Characterization)*

- MM Application of Artificial Neural Network based Integrated Workflow to Characterize Heterogeneous B Limestone from Panglero Field in South East Asia:** Ferico Afrinas, Doni Hernadi (Pertamina. Indonesia), Indrajit Bandyopadhyay, Dedi Juandi, Sangeeta Singhal (Schlumberger)
- NN Study of Fractures Characteristics and Their Contribution to Reservoir Performance (Sirri-A Case Study):** Mohammadreza Ghafoori, Mohammad Roostaeian (National Iranian Oil Company), M.K. Ghasem Al-Askari (Petroleum University of Technology, Ahwaz, Iran), Mersad Abdollahe (Islamic Azad University of Omydieh)
- OO Poroperm Controlling Factors in Khuff Strata, South Pars Gas Field, Offshore Iran:** Behrooz Esrafil Dizaji, Hossain Rahimpour-Bonab, Vahid Tavakoli (University of Tehran)
- QQ Porosity Cyclicity and its Controlling Factors in Sedimentary Strata, a Case Study from South Pars Gas Field, Offshore Iran:** Vahid Tavakoli, Hossain Rahimpour-Bonab (University of Tehran),
- RR Application of Combined AHC and MRGC Methods for Electrofacies Determination, an Example from Kangan and Dalan Formations, South Pars Gas Field:** Vahid Tavakoli, Hossain Rahimpour-Bonab (University of Tehran)
- SS Integrated Fracture Study using Formation Micro Imager, Stoneley Waves and Formation Evaluation Results in Carbonate Reservoir at Gulf of Suez, Egypt:** Essam Abdul El Aziz Bassim, Kaoru Yamaguchi (Arabian Oil Co., Ltd.) Dedi Juandi Mahmoud Emam, Aziza Ali (Schlumberger Logelco Inc.)

## Symposium Sponsors



# Schlumberger

## GERD



## CTC

*Challenging Tomorrow's Changes*

## Symposium Committee 2008

Chairman	Makoto Miyairi, Japan Petroleum Exploration Co., Ltd.
Vice-Chairman	Fumio Okitsu, Consultant
Program	Kazuhiko Tezuka, Japan Petroleum Exploration Co., Ltd.
Finance	Kunihiro Tsuchida, JOGMEC
Printing/Proceedings	Hiroshi Kozano, Teikoku Oil Co., Ltd.
Pre-Registration	Shizu Kobayashi, Schlumberger K.K.
Registration	Tetsuya Yamamoto, Japan Petroleum Exploration Co., Ltd.
Technical Arrangement	Osamu Osawa, Schlumberger K.K.
Convention Facilities	Yusuke Kuwauchi, Mitsui Oil Exploration Co., Ltd.
International Coordination	Tatsuki Endo, Schlumberger K. K.
Award/Gift	Hideki Saito, OYO Corporation
Entertainment	Jiro Watanabe, Geophysical Surveying Co., Ltd.
Review	Hisao Ito, JAMSTEC
Review	Motoyuki Sato, Tohoku University
Review	Satoshi Ujyo, Geothermal Energy R & D Co., Ltd.
Review	Koji Kusaka, Schlumberger K.K.

### Corresponding Address:

**Shizu Kobayashi**  
Schlumberger K. K.  
2-2-1 Fuchinobe, Sagamihara, Kanagawa 229-0006, Japan  
Tel: +81 (42) 759-2115, Fax:+81 (42) 759-4271  
e-mail: [kobayasi@fuchinobe.oilfield.slb.com](mailto:kobayasi@fuchinobe.oilfield.slb.com)



## Registration Information

### REGISTRATION FEE

	Pre-Registration (by Sep. 12)	On Site Registration
Member or Speaker	5,000 yen	6,000 yen
Non-member	6,000 yen	7,000 yen
Student	free	1,000 yen

### Registration fee entitles a delegate to:

- Proceedings
- Technical program

### HOW TO REGISTER

The enclosed Pre-Registration Form must be returned to :

Shizu Kobayashi  
Schlumberger K.K.  
2-2-1 Fuchinobe, Sagamihara, Kanagawa 229-0006, Japan  
Tel: +81(42) 759 2115 Fax: +81(42) 759 4271  
E-mail: [kobayasi@fuchinobe.oilfield.slb.com](mailto:kobayasi@fuchinobe.oilfield.slb.com)

The Deadline for the receipt of the **Pre-Registration** Form will be **September 12, 2008**.

No prior proof of payment is necessary. If any change in your registration is necessary, it must be made in writing to the above address no later than September 12. No changes or cancellations can be made by telephone. Any registration after September 12 is requested to be made on site. The registration desk at the Entrance Hall will be open from 8:30 daily there.

### HOW TO PAY

All payments should be made on site by cash in Japanese Yen.  
No check or credit card will be accepted.

## Speaker Information

All speakers are asked to make pre-registration by **August 31, 2008**.

LCD projector is available. All speakers who use LCD are asked to carry their Power Point files by CD ROM or USB memory and register them in the Slide Center Room 101 at their earliest of convenience.

Each oral presentation is allocated 20 minutes including question and discussion.  
Presentation should be made in English.

## General Information

**DATE:** Monday, September 29, and Tuesday, September 30  
**VENUE:** Technology & Research Center (TRC)  
Japan Oil, Gas and Metals National Corporation (JOGMEC)  
1-2-2, Hamada, Mihama-ku, Chiba 261-0025, Japan  
Tel: +81 (43) 276-9212

### HOW TO GET TO THE JOGMEC-TRC:

#### JOGMEC-TRC Bus Service

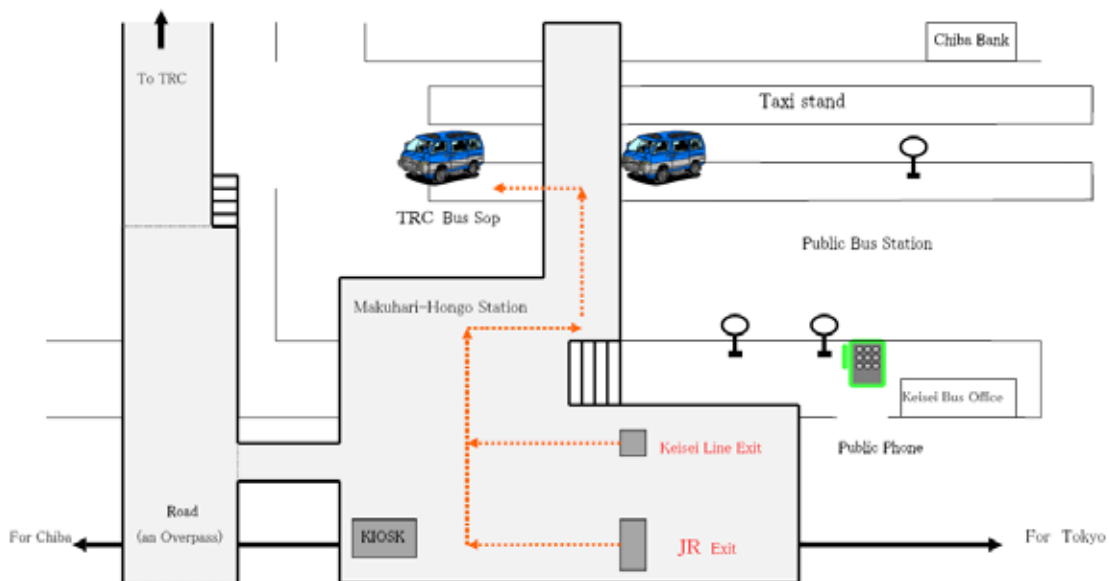
From Makuhari-Hongo Station (JR Sobu Line; 40 min from Tokyo station)

- 10 min. by taxi or 30 min. on foot
- 10 min. by JOGMEC-TRC shuttle bus (see below map)

The bus leaves Makuhari Hongo Station at 8:20, 8:35, 8:50, 9:05 and 9:20.

Please note that these buses for JOGMEC employees, you can ride in a bus if seat is available

#### Where to board a TRC Shuttle Bus at Makuhari Hongo Station

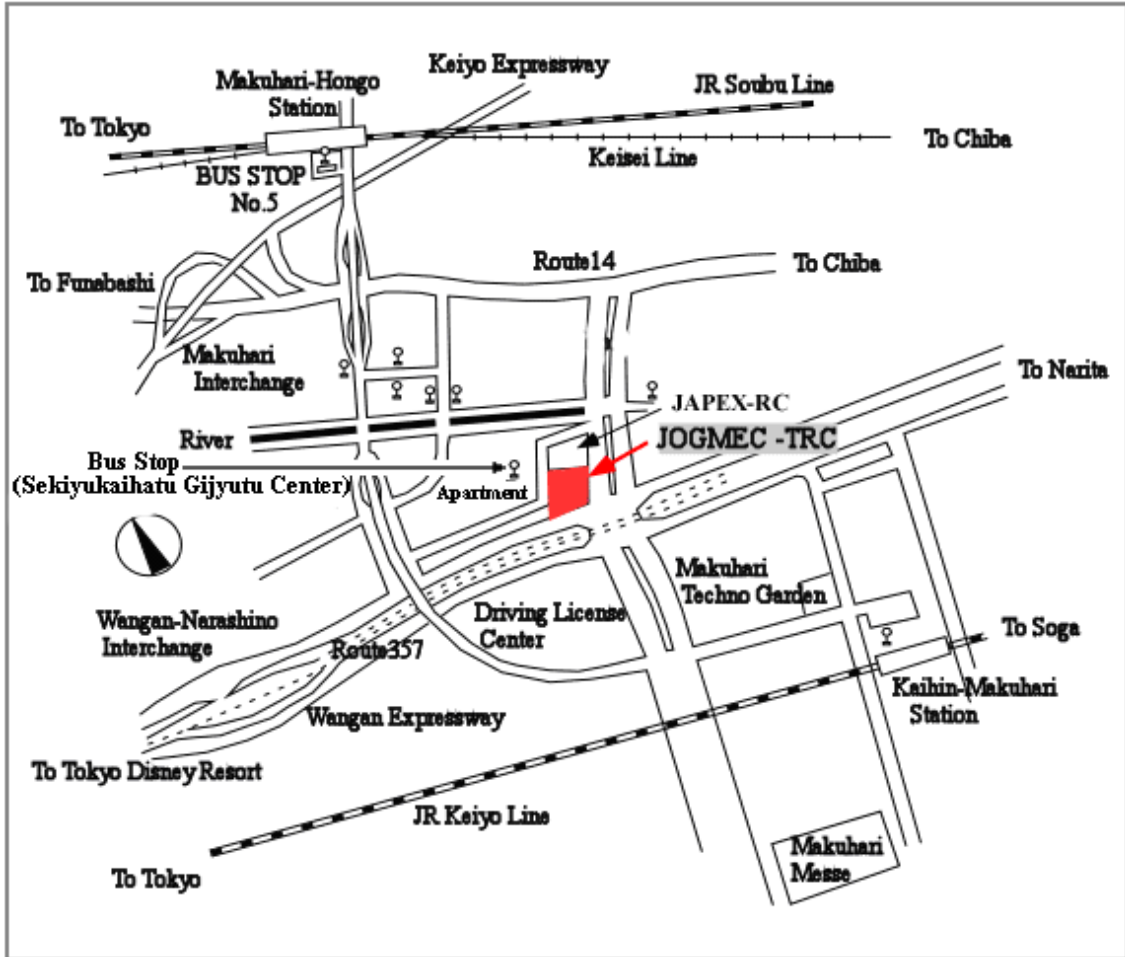


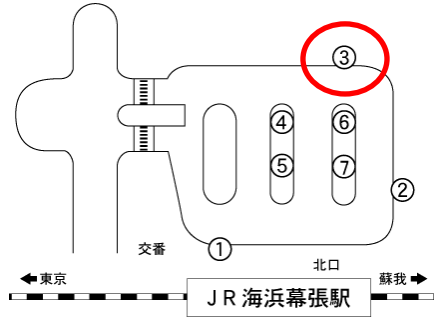
From Kaihin-Makuhari Station (JR Keiyo Line; 30 min. from Tokyo station)

- 10 min. by taxi or 20 min. on foot

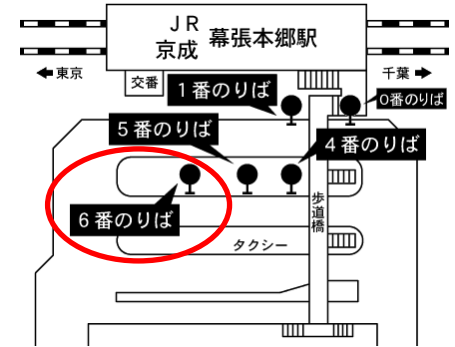
### City Bus Service

City bus services are available from Makuhari-Hongo Station and Kaihinmakuhari station. Please refer to the bus schedule in the next page. The fare is 160yen. There are several bus lines between Makuhari-Hongo Station and Kaihinmakuhari station. Please take “Columbus City Line” and get off at “Sekiyukaihatu Gijyutu Center”.





## Bus Schedule -Columbus City Line-



海浜幕張駅  
Kaihinmakuhari-Station



石油開発技術センター  
Sekiyukaihatsugijyutu-Center  
(JOGMEC-TRC)



幕張本郷駅  
Makuharihongo-Station

幕張本郷駅行き (#22) (For Makuharihongo-Station)	
平日	
6	35 50
7	05 20 35 50
8	05 20 35 50
9	05 25 45
10	05 25 45
11	05 25 45
12	05 25 45
13	05 25 45
14	05 25 45
15	05 25 45
16	05 25 45
17	05 25 45
18	03 16 33 46
19	03 16 33 46
20	03 15 33 45
21	03 15 40
22	00*
*幕張西第三公園止	

幕張本郷駅行き (For Makuharihongo-Station)		海浜幕張駅行き (For Kaihinmakuhari-Station)	
平日		平日	
6	23 43 58	21	47
7	13 28 43 58	07	22 34 52
8	13 28 43 58	07	22 37 52
9	13 33 53	10	22 42
10	13 33 53	02	22 42
11	13 33 53	02	22 42
12	13 33 53	02	22 42
13	13 33 53	02	22 42
14	13 33 53	02	22 42
15	13 33 53	02	22 42
16	13 33 53	02	22 42
17	13 33 54	02	22 42
18	11 24 41 54	02	14 32 44
19	11 24 41 54	02	17 32 47
20	11 23 41 53	02	17 32 47
21	11 28 48	02	17 37 57
22	08*	12**	
*幕張西第三公園止		**浜田緑地止	

海浜幕張駅行き (#6) (For Kaihinmakuhari-Station)	
平日	
6	40
7	00 15 27 45
8	00 15 30 45
9	03 15 35 55
10	15 35 55
11	15 35 55
12	15 35 55
13	15 35 55
14	15 35 55
15	15 35 55
16	15 35 55
17	15 35 55
18	07 25 37 55
19	10 25 40 55
20	10 25 40 55
21	10 30 50
22	05**
**浜田緑地止	

## Accommodation and other travel arrangement

Should you require any assistance for visa, accommodation and other travel arrangement during the Symposium at JOGMEC-TRC Makuhari, please contact JFES Secretary at the following address by facsimile or E-mail:

**Shizu Kobayashi**

Schlumberger K.K.

2-2-1 Fuchinobe, Sagamihara, Kanagawa 229-0006, Japan

Tel: +81 (42) 759-2115, Fax:+81 (42) 759-4271

e-mail: [kobayasi@fuchinobe.oilfield.slb.com](mailto:kobayasi@fuchinobe.oilfield.slb.com)

In order to make proper arrangement, please send your request no later than August 15.

### Land Transportation

For foreign visitors, limousine bus service is the most convenient from Narita Airport to the hotel. Please go to the orange colored "Friendly Airport Limousine Bus" booths, and get on the bus that goes to your hotel. "Keisei Bus" goes to Makuhari area. The cost of the bus will be around 2,000 – 3,000 yen depending on the destination.

Taxi to the hotel around Makuhari area is more than 10,000 yen. The taxi to the center of Tokyo will cost around 30,000 yen.

"Meet & Assist Service" is available on request. The request should be made at least 2 weeks in advance. It will cost about 12,000 yen or more additionally depending on the type of service of your request.

### Accommodation

Some examples of the hotels in Makuhari and Tokyo area are listed below and available at your choice. The actual price will be available once the final itinerary is presented and confirmed.

#### **Makuhari Area**

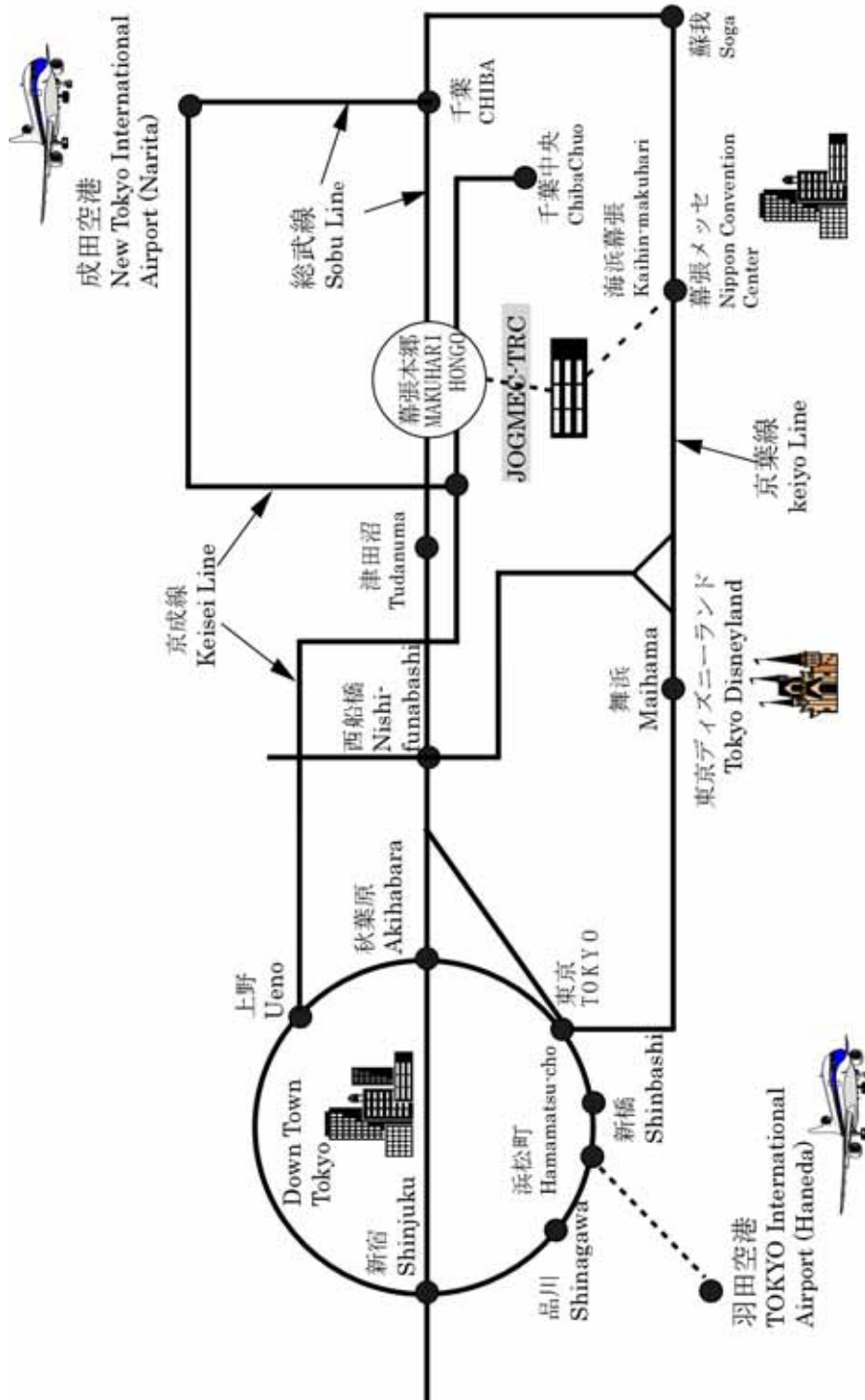
20 min. walk to JOGMEC-TRC or 10 min. by taxi

- Hotel the Manhattan US\$130 ~ US\$180  
(<http://www.the-manhattan.co.jp/english/>)
- Hotel Springs Makuhari US\$100  
(<http://www.springs.co.jp/banquet/index.html>)
- APA Hotel & Resort Tokyo Bay Makuhari US\$100  
(<http://www.tokyobay-makuhari.com/english/index.html>)

#### **Tokyo area**

40 min. to Makuhari Hongo (via Sobu Rapid Train Service) then JOGMEC-TRC bus to Symposium

- Shinagawa Prince Hotel US\$ 150 ~  
 (<http://www.princehotelsjapan.com/shinagawaprincehotel/>)
- Mércure Hotel Ginza Tokyo US\$ 150 ~  
 ([http://www.mercure.com/mercure/fichehotel/gb/mer/5701/fiche\\_hotel.shtml](http://www.mercure.com/mercure/fichehotel/gb/mer/5701/fiche_hotel.shtml))



The 14th Formation Evaluation Symposium of Japan  
JOGMEC-TRC, Chiba, Japan, September 29 - 30, 2008

*Pre-Registration Form*

Name: \_\_\_\_\_

SPWLA Member

Non-Member

Speaker

JOGMEC-TRC / Student

Institute or Company: \_\_\_\_\_

Mailing address: \_\_\_\_\_

\_\_\_\_\_

Tel: \_\_\_\_\_ Fax: \_\_\_\_\_

e-mail: \_\_\_\_\_

Fee

Registration:	Member or Speaker	5,000 yen
	Non-Member	6,000 yen
	Student	free

Total \_\_\_\_\_ yen

Please circle: 29<sup>th</sup> / 30<sup>th</sup> / Icebreaker

Signature: \_\_\_\_\_

Please return this form complete by **September 12, 2008** to;

**Shizu Kobayashi**

Schlumberger K. K.

2-2-1 Fuchinobe, Sagamihara, Kanagawa 229-0006, Japan

Tel: +81 (42) 759-2115, Fax: +81 (42) 759-4271

e-mail: [kobayasi@fuchinobe.oilfield.slb.com](mailto:kobayasi@fuchinobe.oilfield.slb.com)