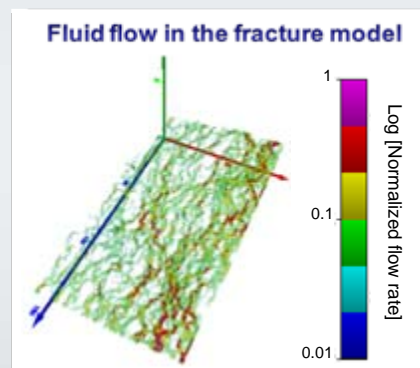
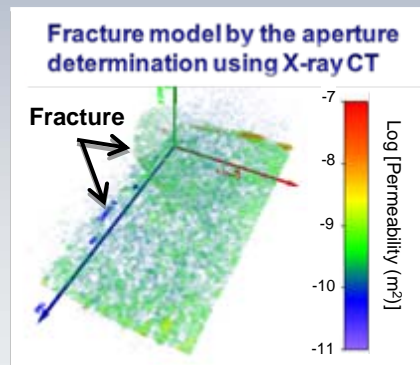
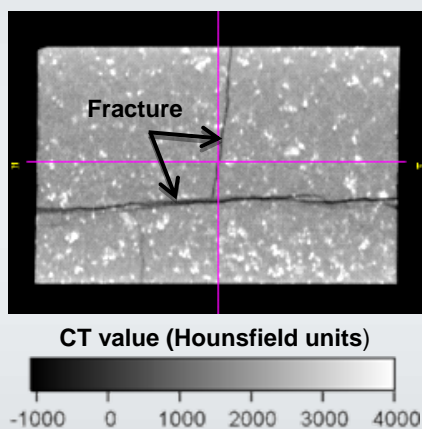
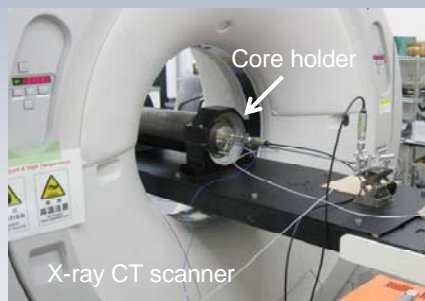


The 17th Formation Evaluation Symposium of Japan

- Special Session: Core Analysis -



A X-ray CT based numerical analysis of fractured core samples has been developed, providing insights into fracture flow characteristics in reservoirs.
(Watanabe, et al., the BEST PAPER of JFES2010)

JOGMEC-TRC, Chiba
September 29 - 30, 2011

Sponsored by Japan Formation Evaluation Society (JFES)
Cosponsored by Technology & Research Center, Japan Oil, Gas and Metals National Corporation (JOGMEC-TRC)
Supported by Japanese Association for Petroleum Technology
Society of Exploration Geophysicist of Japan
Geothermal Research Society of Japan
Society of Petroleum Engineers, Japan Section



<http://www.geocities.jp/ymmiya/index.htm>

