

## The 13th Formation Evaluation Symposium of Japan

The 13th Formation Evaluation Symposium of Japan was successfully held on September 27 - 28, 2007 at the Technology & Research Center, JOGMEC in Chiba, Japan. Over 60 people from oil / gas companies, service contractors and national research institutes attended the symposium, including 16 people from overseas. The technical session started with the keynote address by Mr. Terry Quinn, the president elect of SPWLA followed by 23 oral presentations in 6 sessions, consisting of scientific drilling, borehole imaging, fractured reservoir / microseismics, new tool / technology, reservoir characterization and general formation evaluation. This year JFES featured the borehole imaging as a special session and invited Dr. Arnaud Etchecopar from Schlumberger Riboud Product Center of France, who made an invited lecture on “Borehole image as a tool box for reservoir description”.



An annual business meeting was held at



the end of the first day, where the board members for 2007-2009 and amendment of By-Laws were approved. After the annual meeting, all attendees enjoyed the icebreaker, where the best paper award of 2006 symposium was presented to Dr. Kenzo Kiho and co-authors for their paper “Development of the Wireline MWD System for Controlled Drilling Technology”. We all celebrated their honor and promoted friendship during the icebreaker.

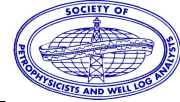
## Invitation to SPWLA 2008 Joint Regional Technical Forum, SE Asia / Japan / Australia

It has been announced that SPWLA 2008 JOINT REGIONAL TECHNICAL FORUM will be held on August 24<sup>th</sup> to 27<sup>th</sup>, 2008. The topic will be “RESERVOIR CHARACTERIZATION, CHALLENGES from ASIA-PACIFIC REGION. More details will be announced later, but we JFES will contribute in organizing this regional event from Japan.

For more details, please see:

[http://www.spwla.org/events/2008\\_Bangkok.pdf](http://www.spwla.org/events/2008_Bangkok.pdf)

SPWLA JOINT REGIONAL PETROPHYSICAL TECHNICAL FORUM  
An event held in collaboration with FESI, FESM, JFES & FESAus Chapters



## SPWLA 2008 SE Asia / Japan / Australia Technical Forum

Reservoir Characterization - Challenges from the  
Asia-Pacific Region-cases from SE Asia/Japan/Australia

24 Aug – 27 Aug 2006, Bangkok, Thailand

(24 Aug pm – Registration / Ice Breaker)

**CALL FOR ABSTRACTS**

Register online at [www.spwla.org](http://www.spwla.org)



Society of Petrophysicists & Well Log Analysts  
8866 Gulf Freeway, Suite 320  
Houston, TX 77017 USA

Courtesy Cambridge Carbonates

**SPEAKER SOLICITATION:** The Steering Committee seeks Abstracts from people who wish to present. Only abstracts will be published. Hence no formal technical paper is required. In addition to planned speakers, the Committee desires to attract participants with a diversity of expertise and experiences.

**Abstract Application Deadline : March 3 2008**

**Presentation Deadline : July 25 2008**

### RESERVOIR CHARACTERIZATION – CHALLENGES from the ASIA-PACIFIC REGION



#### CONFERENCE FORMAT

SPWLA Technical Forums are off-the-record Petrophysical discussions focused on a specific areas of interest. This Conference addresses reservoir challenges, practices, evaluations and solutions.

SPWLA Technical Forums are structured but informal. No papers or transactions are published. We encourage submission of work in progress or problems not yet solved. Presentations will typically be 20-30 minutes (including questions). In keeping with conference objectives and practice in other SPWLA-sponsored events, commercialism in speaker presentations will not be permitted.

Courtesy Cambridge Carbonates

# Invitation to 62nd Chapter Meeting

We would like to announce that the forthcoming Chapter Meeting will be held as follows. Please let us know if you are interested in attending this meeting by **December 10<sup>th</sup>**, for Chapter meeting to Ms. Ayumi Higuchi ([ahiguchi@tokyo.oilfield.slb.com](mailto:ahiguchi@tokyo.oilfield.slb.com)).

**Date:** December 19<sup>th</sup>, 2007

**Time:** 16:00 – 17:30

**Program:** Preliminary report on the IODP Expedition 314;  
NanTroSEIZE Stage 1- LWD Transect

**Contributors:** Moe K. T., Nakamura Y., Saito S., Yamada Y. and  
Expedition 314 Scientific Party

**Speaker:** Moe Kyaw Thu

**Biography:** Moe K. T. graduated in Geology from Yangon University, Myanmar and received Master and Ph.D. from Ocean Research Institute, the University of Tokyo specializing in Marine Geology. His professional experience covers mud logging in offshore oil and gas explorations, and downhole logging in Ocean Drilling Program as Logging Staff Scientist. He joined CDEX as staff scientist and worked as Expedition Project Manager for IODP Expedition 314 in Nankai Trough LWD Transect.

Expedition Number	Expedition 314
Expedition Prospectus	Riserless drilling without coring at all six Stage 1 sites using dedicated Logging-While-Drilling (LWD) technology at unstable formations associated with accretionary prism environment. Results from the variety of logging measurements planned in this expedition will be crucial for optimizing the subsequent Stage 1 expeditions for coring and observatory operations, and for planning future stages.
Location	Nankai Trough, Kumano-nada, Offshore Kii peninsula, Japan
Duration of Expedition	From Sept. 21 to Nov. 16 2007

**Venue:** Japan Agency of Marine-Science and Technology, Tokyo Office

