

Announcement from the Board

Mr. O. Senoh, Mr. K. Kato and Mr. H. Ohtomo have terminated their duties at the SPWLA Japan Chapter, and we thank them for their precious contributions to the Japan Chapter. Simultaneously, we are pleased to announce that the following members are to be replaced the leaving members to succeed their duties.

M. TAKAYAMA, candidate for *Vice President, Membership*, is a Senior Geologist of Exploration Division for Japan Petroleum Exploration Co., Ltd. (JAPEX). He received his B.S. degree in 1984, and M.S. in Petrology in 1986 from Kyoto University. Since joining JAPEX, he has been engaged in several projects, dealing with formation evaluation. From 1996 to 1999, he worked as a Senior Geologist at the Technical Department of JNOC. After returning to JAPEX, he served as his current assignment. He is a member of SPWLA and JAPT.

J. WATANABE, candidate for *Director*, is a Sales Manager of Geophysical Surveying Co., LTD. He graduated from Akita University in 1981. Since joining Geophysical Surveying Co., LTD. in 1981, he has worked as a wireline logging engineer. In 1981 and 1992, He has been engaged in a lot of wireline survey at the oil and geothermal field. He was transferred to his present position in 1992. He is a member of SPWLA and SEG-J.

H. SAITO, candidate for *Director*, is a Deputy General Manager of Engineering Geophysics R&D Dept., Tsukuba Technical Research and Development Center, OYO Corporation. He received his B.Sc. degree from Hokkaido University in 1980, and since joining OYO Corporation the same year, he has been involved with the field of exploration geophysics for 20 years. From 1989 to 1991, he was appointed as Visiting scientist of the Earth Resources Laboratory in Massachusetts Institute of Technology, where he had been engaged with research and development of seismic tomography. He returned back to OYO Corporation as Manager of Seismic Group, and of the Engineering Geophysics Group, prior to the present position he took in 1999.

Best Paper - The 6th Well Logging Symposium of Japan

Following two papers got the same number of vote and selected as the Best Paper of the 6th Symposium 2000:

"Fractured Reservoir Management by Fiber Optic Distributed Temperature Measurement"
Naotsugu Ikeda (Shinco Co.)

"Borehole Acoustic Reflection Survey Experiments in Horizontal Wells for Accurate Well Positioning"
Hiroaki Yamamoto, Shin'ichi Watanabe (Schlumberger K.K.), Vianney J.M.V.Koelman, Jan Geel (Petroleum Development Oman), Alain Brie, Kasumi Fujii (Schlumberger K.K.)
and Richard Coates (Schlumberger-Doll Research)

Call for Abstracts - The 7th Well Logging Symposium of Japan

Following the successful symposium of last year, we hold "The Seventh Well Logging Symposium of Japan" at **JNOC-TRC, Chiba on September 27-28, 2001**. All persons involved with well logging, formation evaluation and borehole geophysics are invited to present their activities and exchange information.

Abstract is due no later than **June 15th, 2000**. Please refer to "**Call for Abstracts**" attached for detail information. Your contribution is expected. Let's submit Abstract !

Invitation to 35th Chapter Meeting

We would like to announce that the forthcoming Chapter Meeting will be held as follows.

Venue : **Teikoku Oil Co., Ltd**
 1-31-10 Hatagaya, Shibuya-ku
 Tokyo 151-8565
 Tel (03)3466-1234

(See the attached map)

Date : **Wednesday, March 21, 2001**

Program:

16:00 Estimation of Reservoir Properties by Monte Carlo Simulation
 by Kazuo Nakayama (JGI, Inc.)

** Presentations in Japanese*

17:30 Snacks Buffet

Abstract of the topics

Title : Estimation of Reservoir Properties by Monte Carlo Simulation

Speaker : Kazuo Nakayama (JGI, Inc.)

Abstract :

The shallow gas zone in the Pantai Pakam Timur (PPT) field, located in Northern Sumatra, Indonesia, has recently become an important target for development. However, only two wells were drilled in peripheral part of the field. In this situation the method of Geostatistics is hardly applied because of less control points, but there is a new suitable method to estimate reservoir properties under the condition of such few control points (GDI: Geology Driven Integration Tool). To compensate few controls, GDI creates pseudo-wells by Monte Carlo Simulation method with regional geological constraints in its regulation, and generates theoretical seismic traces from them. Then the suitable seismic attributes are selected after checking the proportionality with the given reservoir property. Finally the artificial neural network (ANN) is applied to detect the weighting factors, which relate the selected seismic attributes to the given physical reservoir properties. We apply this method to the 2-D seismic records in the PPT field to extract successfully the distribution of porosity and thickness of the gas sandstone reservoir. The most prospected area is figured out in the southern part of the field, where the net thickness of gas zone is estimated to increase 27 meters with fairly higher porosity of 28%, which can be fairly confirmed by the well proposed and drilled by this study. Once getting the distribution, it is easier to calculate the total rock volume of the target reservoir under non-homogenized situation, and hence to progress on estimating more precise volume of reserves in place. Thus this method has an advantage in estimating reservoir characters from a few well data in the early development stage, or even in the late exploration stage. It is certainly important for asset managing that new idea should save the cost even in the stage of exploration.



['94-'95 Annual schedule of Chapter Meetings]

May 23, 1994 *Japan National Oil Corporation*
July 25, 1994 *Japan Petroleum Exploration Co.,Ltd*
September 27, 1994 *Japan Oil Engineering Co.,Ltd*
November 29, 1994 *Technical Research Center, Teikoku Oil Co.,Ltd*
January 23, 1995 *Indonesia Petroleum, Inc.*
March 13, 1995 *Waseda University*
May 29, 1995 *Japan Oil Development Co.,Ltd*
September 21-22, 1995 *Technology Research Center, Japan National Oil Corporation*

['95-'96 Annual schedule of Chapter meeting]

November 27, 1995 *Idemitsu Oil Development Co.,Ltd*
January 29, 1996 *Geothermal Energy R& D Co.,Ltd*
March 26, 1996 *Arabian Oil Co.,Ltd*
May 27, 1996 *Japan Petroleum Exploration Co.,Ltd*
September 26-27, 1996 *Technology Research Center, Japan National Oil Corporation*

['96-'97 Annual schedule of Chapter meetings]

November 25, 1996 *Technical Research Center, Teikoku Oil Co.,Ltd*
January 27, 1997 *Indonesia Petroleum, Inc.*
March 26, 1997 *Waseda University*
May 26, 1997 *Japan Oil Development Co., Ltd.*
September 24-25, 1997 *Technology Research Center, Japan National Oil Corporation*

['97-'98 Annual schedule of Chapter meetings]

November 25, 1997 *Idemitsu Oil Development Co.,Ltd*
January 26, 1998 *Geothermal Energy R& D Co.,Ltd*
March 30, 1998 *Schlumberger K.K.*
May 25, 1998 *Japan Petroleum Exploration Co.,Ltd*
September 24-25, 1998 *Technology Research Center, Japan National Oil Corporation*

['98-'99 Annual schedule of Chapter meetings]

November 27, 1998 *Technical Research Center, Teikoku Oil Co.,Ltd*
January 27, 1999 *Indonesia Petroleum, Inc.*
March 31, 1999 *Waseda University*
May 25, 1999 *Tohoku University*
September 29-30, 1999 *Technology Research Center, Japan National Oil Corporation*

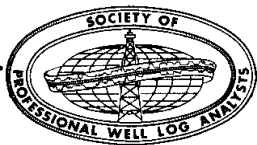
['99-'00 Annual schedule of Chapter meetings]

November 29, 1999 *Mitsui Oil Exploration Co., Ltd.*
January 31, 2000 *Idemitsu Oil & Gas Co., Ltd.*
March 27, 2000 *Geothermal Energy R&D Co., Ltd.*
May 22, 2000 *Japan Petroleum Exploration Co.,Ltd.*
September 26-27, 2000 *Technology Research Center, Japan National Oil Corporation*

['00-'01 Annual schedule of Chapter meetings]

December, 4, 2000 *Schlumberger K.K.*
March 21, 2001 **Teikoku Oil Co.,Ltd**
May 8, 2001 *Indonesia Petroleum, Inc.*
September 27-28, 2001 *Technology Research Center, Japan National Oil Corporation*





*The Japan Chapter of
The Society of Professional Well Log Analysts*

The Seventh Well Logging Symposium of Japan

**-Pre-meeting of the SPWLA 2002-
TRC-JNOC, Chiba, September 27-28, 2001**

CALL FOR ABSTRACTS

Sponsored by Japan Chapter of Society of Professional Well Log Analysts
Cosponsored by Technology Research Center, Japan National Oil Corporation
Supported by Japanese Association for Petroleum Technology
Society of Exploration Geophysicist of Japan
Geothermal Research Society of Japan
Society of Petroleum Engineers, Japan Section
Subsurface Instrumentation Division of MMIJ

The Seventh Well Logging Symposium of Japan will be held at the Technology Research Center-Japan National Oil Corporation, Chiba on September 27-28, 2001. All persons involved with the Oil, Gas, Geothermal Energy and Geoengineering industry and research institutes are invited to submit abstracts for presentation at the symposium.

NOTE TO AUTHORS: This 7th symposium will be the pre-meeting of SPWLA 2002 (The 43rd Annual Well Logging Symposium, Oiso, Japan, June 2-5th, 2002). Therefore, on this occasion **a full paper is not necessary, instead only a 1 page abstract (plus on site presentation) is required.** Selected papers from 7th symposium will be recommended for presentation and publication by the Japan chapter in SPWLA 2002. Notification of acceptance will be made in **June 2001**.

ABSTRACT IS DUE NO LATER THAN JUNE 15, 2001

-Submission by e-mail is preferable-

Submit abstracts to : Makoto Miyairi
V.P. Technology
SPWLA Japan Chapter
Telephone:+81(43)275-9311 Fax:+81(43)275-9316
e-mail : miyairi@rc.japex.co.jp

Title of Paper:

Author(s):

Corresponding Author:

Company:

Address:

Tel: Fax:..... e-mail:

Has the paper been presented before(Yes or No)

Subject classified as (check) :

Acoustic/borehole seismic	Electrical/electromagnetic logging
Borehole imaging	Reservoir Characterization
Cased-hole/production logging	Measurements while drilling
General formation evaluation techniques	Petrophysical properties/relationships
Fractured reservoirs	Geothermal Applications
Geological applications	Geoengineering Applications

