

## **Announcement from the Secretary Board**

### **Deadline of Abstract Submission for the 16<sup>th</sup> Formation Evaluation Symposium is extended to June 26<sup>th</sup>.**

Please refer to the revised “Call for Abstract” attached to this Newsletter.

### **Invitation to the 72<sup>nd</sup> Chapter Meeting**

We are pleased to announce that the forthcoming Chapter Meeting will be held as follows. Those who are interested in attending this meeting are asked to inform Shizu Kobayashi (kobayashi4@slb.com) **by June 25<sup>th</sup>**.

**Date & Time:** July 6, 2010, 16:00 – 17:30  
**Venue:** Schlumberger K.K. Tokyo Office  
7F Meiji Yasuda Life Bldg.  
2-7-16 Yaesu, Chuo-ku  
Tokyo 104-0028  
Tel: 03- 3243-8160

#### **Program:**

#### **16:00 – 16:45 First Talk**

#### **Introduction of downhole acoustic source and a few examples of Crosswell seismic survey**

**Tatsuki Endo (Schlumberger K.K.)**

Abstract: Crosswell survey technique with Electromagnetic or Acoustics measurements are known to fill the gap of information between two or more wells. Depth of investigation of these measurements is much deeper compare to well logs. Data resolution is in between surface measurements and well logs. I will introduce acoustic downhole sources used for crosswell survey and show a few examples how this measurement is used.

#### **16:45 – 17:30 Second Talk**

#### **Next generation logging while drilling (LWD) sonic tool**

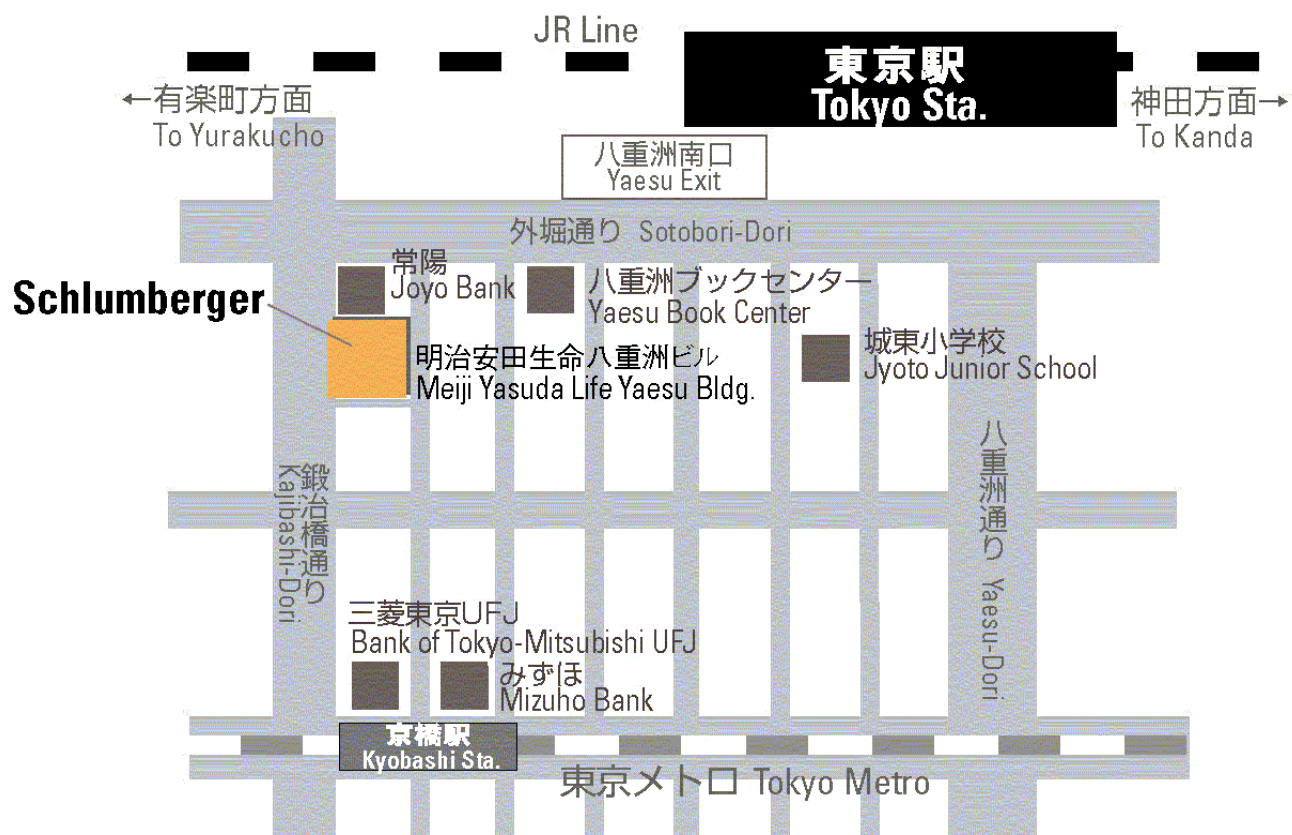
**Hiroshi Nakajima (Schlumberger K.K.)**

Abstract: A new multipole acoustic tool for logging while drilling is presented. This tool will have enhance capabilities allowing the acquisition of high and low frequency monopole together with quadrupole waveforms to estimate shear slowness in slow formation.

In addition to these enhance acoustic features, the tool has an unique acoustic structure providing superior quality measurement. In this talk the tool will be presented together with real field data illustrating the performance of this next generation LWD sonic tool.

17:30 – 19:30 Icebreaker (¥1,000)

## Access Map



### シュルンベルジェ株式会社

#### 東京事業所

〒104-0028

東京都中央区八重洲2丁目7-16

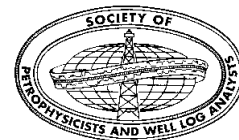
明治安田生命八重洲ビル7F

#### Schlumberger K.K.

7F Meiji Yasuda Life Yaesu Bldg.,

2-7-16 Yaesu, Chuo-ku, Tokyo 104-0028

- ・東京駅八重洲南口から徒歩5分
- ・東京メトロ京橋駅から3分



## The 16th Formation Evaluation Symposium of Japan JOGMEC-TRC, Chiba October 7 - 8, 2010

### CALL FOR ABSTRACTS

**Sponsored by Japan Formation Evaluation Society (JFES)**  
**Cosponsored by Japan Oil, Gas and Metals National Corporation**  
**- Technology & Research Center (JOGMEC-TRC)**

The 16th Formation Evaluation Symposium of Japan will be held at Japan Oil, Gas and Metals National Corporation - Technology & Research Center (JOGMEC-TRC), Chiba on October 7 - 8, 2010.

All persons involved in oil, gas, geothermal, geo-engineering industry and scientific drillings are invited to submit abstracts of papers for presenting at the symposium. The symposium will cover General Formation Evaluation, Reservoir Characterization, Fracture delineation, New Tool / New Technology, Well Test / Production Logging, Methane Hydrates and Geophysical Applications.

A special session “**Carbon Capture and Storage (CCS)**” will be featured this year. CO<sub>2</sub> is deemed as one of the main causes for global warming and it is believed that “Geological Storage” is one of the effective ways of reducing CO<sub>2</sub> emission to atmosphere. JFES provides an opportunity to exchange technologies and knowledge relating to geological storage of CO<sub>2</sub>.

JFES encourages students to participate. **Best Student Awards** will be presented to outstanding papers.

**NOTE TO AUTHORS:** Complete attached application form and submit with abstract containing 200 to 400 words in English by **e-mail**. Acceptance will be notified by **the 9th of July, 2010**. If accepted, a complete manuscript or extended abstract in English will be required for the proceedings by **August 16, 2010**.

**ABSTRACT IS DUE NO LATER THAN JUNE 26, 2010**

Submit abstracts to: Kanako Furuto  
Assistant of VP-Technology, JFES  
JAPEX Research Center  
1-2-1 Hamada, Mihama-ku, Chiba 261-0025, JAPAN  
Telephone: +81(43)275-9311 Fax: +81(43)275-  
9316  
e-mail: [kanako.furuto@japex.co.jp](mailto:kanako.furuto@japex.co.jp)



The 16th Formation Evaluation Symposium of Japan - JOGMEC-TRC, Chiba  
 October 7-8, 2010

Co-Authors1	Name		
	Affiliation		
	E-mail	Tel	Fax
Co-Authors2	Name		
	Affiliation		
	E-mail	Tel	Fax
Co-Authors3	Name		
	Affiliation		
	E-mail	Tel	Fax
Co-Authors4	Name		
	Affiliation		
	E-mail	Tel	Fax
Co-Authors5	Name		
	Affiliation		
	E-mail	Tel	Fax
Co-Authors6	Name		
	Affiliation		
	E-mail	Tel	Fax
Co-Authors7	Name		
	Affiliation		
	E-mail	Tel	Fax