

The 26th Formation Evaluation Symposium of Japan

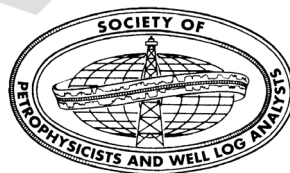
Special Session
“Integrated Evaluation”

PROGRAM

Virtual Symposium
September 30, October 1 & 7, 2021

JFES

Japan
Formation Evaluation
Society



Sponsored by Japan Formation Evaluation Society – A Chapter of SPWLA
Cosponsored by Technology & Research Center, Japan Oil, Gas and Metals
National Corporation
Supported by Geothermal Research Society of Japan
Japanese Association for Petroleum Technology
Society of Exploration Geophysicist of Japan
Society of Petroleum Engineers, Japan Section

<https://jfes-spwla.org/>

Sponsors

(To be announced)

Program

Thursday, September 30

Opening
Invited Talk
Special Session: Integrated Evaluation
Break
Machine learning
Technical Session

Friday, October 1

Invited Talk
Reservoir Characterization
Break
General Meeting
(Continue) Reservoir Characterization
Geothermal
Technical Session

Thursday, October 7

Keynote Address
Reservoir Mapping
Break
Formation Evaluation
Well Integrity Assessment
Technical Session
Closing

Technical Session: Thursday, September 30

Opening

Chairperson: Aiko Takada (JAPEX)

- 13:00** **Opening Address**
Professor Masanori Kurihara (President of JFES; Waseda University)

Invited Talk: Integrated Team-based Approach

Chairperson: Takeo Aoyama (JX)

- 13:10** **Invited Talk:**
**KEY ELEMENTS IN THE FULL ITERATION PROCESS WITH MULTI-DISCIPLINE
TEAM FOR THE SUCCESSFUL SUBSURFACE EVALUATION**
Mr. Ryuichi Uchimura (JX Nippon Oil & Gas Exploration)

Special Session: Integrated Evaluation

Chairperson: Masaaki Okita (JX)

- 13:40** **INTEGRATED FLUID CHARACTERIZATION OF NEAR CRITICAL FLUID TO
UNDERSTAND RESERVOIR FLUID DISTRIBUTION AND GEOLOGICAL
STRUCTURE:**
Bei Gao (Schlumberger), Lu Fawei (CNOOC), Zhang Zhiqiang (COSL)
- 14:00** **CONTINUOUS MINERALOGICAL FORMATION EVALUATION USING
GEOCHEMICAL SPECTROSCOPY WELL LOGS IN MANTLE-CRUST
TRANSITION ZONE: CASE STUDY FROM THE SCIENTIFIC OMAN DRILLING
PROJECT:**
Yuki Machara (Schlumberger), Kyaw Moe, Yasuhiro Yamada (JAMSTEC)
- 14:20** **INTEGRATED MINERAL QUANTIFICATION TECHNIQUE FOR VOLCANIC
RESERVOIRS:**
Takeaki Otani, Tetsuya Yamamoto, Shogo Kawasumi (JAPEX), Tatsuya Hattori (JOGMEC)
- 14:40-14:50** **Break**

Machine learning

Chairperson: Takahiro Hasegawa (CTC)

- 14:50** **IMPROVEMENT OF ACCURACY FOR ESTIMATING PERMEABILITY
DISTRIBUTION USING DEEP LEARNING:**
Yuri Kanai, Masanori Kurihara (Waseda University), Yutaro Takayanagi (Salesforce.com)
- 15:10** **MACHINE LEARNING TO PREDICT LARGE PORES AND PERMEABILITY IN
CARBONATE RESERVOIRS USING STANDARD LOGS**
Ibrahim Milad, Russell Farmer (BP)

Technical Session

Chairperson: *Takuya Ishibashi (AIST)*

15:30-15:45 Presentation by Sponsor
(To be announced)

15:45-16:00 Presentation by Sponsor
(To be announced)

Technical Session: Friday, October 1

Invited Talk: Integrated Technical Analysis

Chairperson: *Tetsuzo Fukunari (JOGMEC)*

13:00 Invited Talk:
CORE, LOG AND SEISMIC DATA INTEGRATION FOR 3D MODELLING OF A METHANE HYDRATE PROJECT
Dr. Machiko Tamaki (Japan Oil Engineering)

Reservoir Characterization

Chairperson: *Yuki Maehara (Schlumberger)*

13:30 EXAMINATION ON PRACTICAL COUPLING METHODS OF FLOW SIMULATOR AND GEOMECHANICAL SIMULATOR FOR PREDICTING METHANE HYDRATE DISSOCIATION AND PRODUCTION BEHAVIOR:

Takafumi Kawanami (Waseda University), Shigeki Iwata (Iwata Zouendoboku), Masaru Sawata (INPEX), Masanori Kurihara (Waseda University), Norio Temma (AIST), Koya Akamine (JOE), Akira Takiguchi (West Japan Engineering Consultants)

13:50 DEVELOPMENT OF COMPOSITIONAL SIMULATOR CAPABLE OF CALCULATING BOTH FLOW AND GEOMECHANICAL BEHAVIOR FOR PREDICTING SEISMICITY INDUCED BY CCS:

Reon Suzuki (Waseda University), Shimon Nagao (JERA), Masanori Kurihara (Waseda University)

14:10 DEVELOPMENT OF THREE-DIMENSIONAL-COMPOSITIONAL-THERMAL-FLOW SIMULATOR FOR PREDICTING HEAVY OIL RECOVERY PERFORMANCES BY SOLVENT ASSISTED STEAM INJECTION:

Seiya Inagaki (Waseda University), Daiki Kanno (JX Nippon Oil & Gas Exploration), Masanori Kurihara (Waseda University)

14:30-14:35 Break

14:35-15:00 General Meeting

15:00 SANDFACE MEASUREMENT OF ASPHALTENE PRECIPITATION TO DETERMINE ITS ONSET:

Gibran Hashmi, Rohin Naveena-Chandran, Farrukh Hamza, Jason Rogers (Halliburton), John Meyer, Sara Chapman (Kosmos Energy)

Geothermal

Chairperson: *Tatsuya Sato (GERD)*

- 15:20 PERMEABILITY ENHANCEMENT BY SELECTIVE MINERAL DISSOLUTION OF ROCKS IN GEOTHERMAL ENVIRONMENTS:**
Luis Salalá, Ryota Takahashi, Noriaki Watanabe, Kengo Nakamura, Noriyoshi Tsuchiya, Takeshi Komai (Tohoku University)
- 15:40 FLOW-INDUCED MICROFRACTURING OF GRANITE IN CONVENTIONAL AND SUPERHOT GEOTHERMAL ENVIRONMENTS:**
Ryota Goto, Eko Pramudyo, Noriaki Watanabe, Kiyotoshi Sakaguchi (Tohoku University), Youqing Chen (Kyoto University), Takeshi Komai (Tohoku University)

Technical Session

Chairperson: *Masatoshi Nishi (INPEX)*

16:00-16:15 Presentation by Sponsor
(To be announced)

Technical Session: Thursday, October 7

Keynote

Chairperson: *Aiko Takada (JAPEX)*

- 13:00 Keynote Address (Title to be announced)**
Ms. Katerina Yared (President-elect of SPWLA; SM Energy)

Reservoir Mapping

Chairperson: *Tetsuya Yamamoto (JAPEX)*

- 13:30 INDIVIDUALIZED MULTI-SCALE RESERVOIR MAPPING SERVICES AS CHALLENGE-ORIENTED SOLUTIONS TO EFFICIENTLY DEVELOP THICK LAMINATED RESERVOIR WITH BOTTOM WATER:**
Botao Chang (Schlumberger), Xiang Tian (CNOOC-Shenzhen)
- 13:50 SUBSURFACE VISUALIZATION AND QUANTITATIVE MAPPING SERVICE TO MANAGE PRODUCTION STEERING AND RESERVE ASSESSMENT OF DYNAMIC REMAINING OIL:**
Botao Chang (Schlumberger), Liu Chenglin, Ren Yang, Wang Chao (CNOOC-Shenzhen)
- 14:10 FIT-FOR-PURPOSE GEOSTEERING SOLUTIONS HELPING UNLOCK TIGHT RESERVOIR POTENTIAL, CASE STUDIES FROM JM PROJECT, WEST CHINA:**
Kai Wu (Schlumberger), Fei Wang (affiliation?)
- 14:30-14:40 Break**

Formation Evaluation

Chairperson: Satoru Hada (GSC)

- 14:40 MINERALOGY AND FLUID IDENTIFICATION FOR TIGHT GAS RESERVOIR IN EAST ORDOS BASIN WITH ADVANCED MULTI-FUNCTION PULSED NEUTRON MEASUREMENT:**
Liang Cai, Jin Long Wu, Hou Yu Ting (Schlumberger)

Well Integrity Assessment

Chairperson: Satoru Hada (GSC)

- 15:00 A ROBUST EXAMINATION OF CBL WAVEFORM DATA THROUGH MULTIPLE CASING WITH NOVEL METHODOLOGY OF PEAK AMPLITUDE CEMENT ANALYSIS (PACE): A CASE STUDY IN FAR EAST TEST FIELD:**
Laura Martel, M. S. Iyer, Sarvagya Parashar (Halliburton)
- 15:20 THRU-TUBING INTEGRITY ASSURANCE IN CO₂-INJECTION WELL USING ELECTROMAGNETIC CORROSION LOGGING TOOL: A CASE STUDY IN FAR EAST TEST FIELD, JAPAN:**
Aditya Arie Wijaya (Halliburton)

Technical Session

Chairperson: Tadahiro Nagano (Schlumberger)

15:40-15:55 Presentation by Sponsor
(To be announced)

15:55-16:10 Closing

Symposium Committee 2021

Chairman	Masanori Kurihara, Waseda University
Vice-Chairman	Tetsuya Yamamoto, JAPEX
Finance	Kunihiro Tsuchida/Tetsuzo Fukunari, JOGMEC
IT	Shinnosuke Uchida, Summit Energy
Sponsor	Shinichi Takaoka, Mitsui Oil Exploration Co., Ltd.
Proceedings/Program	Aiko Takada, JAPEX
Int'l Coordination	Yuki Maehara, Schlumberger K.K.
Poster	Tetsuya Tamagawa, JAPEX
Award/Gift	Tatsuya Sato, Geothermal Energy R&D Co., Ltd.
Award/Count	Chisato Konishi, OYO Corporation
Review	Masaaki Okita, JX Nippon Oil & Gas Exploration
Review	Masatoshi Nishi, INPEX
Review	Satoru Hada, Geophysical Surveying Co., Ltd
Review	Shinichi Sakurai, Independent Scientist
Review	Tadahiro Nagano, Schlumberger K.K.
Review	Takahiro Hasegawa, CTC
Review	Takeo Aoyama, JX Nippon Oil & Gas Exploration
Review	Takuya Ishibashi, AIST
Review	Yoshinori Sanada, JAMSTEC
Registration	Kanako Furuto, JAPEX